



A.B. Dental Devices' Short Implants - your solution to reduced alveolar bone height

A.B. Dental Devices holds *short implants (L = 5, 6, 7, 8 mm, D = 5, 6, 7, 8 mm and more).

Short Implants are:

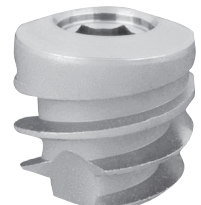
- The answer for reduced alveolar bone height.
- An alternative to complicated and minimally invasive treatment modality (bone grafting and sinus floor elevation).
- Well accepted by patients.
- Reduce risks and side effects.

The greatest occlusal stresses are concentrated within 5 mm. of the alveolar crest. Our studies revealed comparable survival rates to those reported for longer implants.

* Standard and Platform Switch



I15



I5



I5

