

NEW
From A.B. Dental Devices

A.B. Dental Devices' Short & Wide Implants Your solution to reduced alveolar bone height.

A.B. Dental Devices holds short implants with lengths of 6mm and even 5mm with diameters of 4.5mm-8mm.

Short Implants are:

- The answer for reduced alveolar bone height.
- An alternative to complicated and invasive treatments (bone grafting and sinus lifting).
- The width compensates for the short length and provides better load distribution.
- The special design with deep wings provides good initial stability.
- Special surface roughening enables improved osseointegration.
- Platform Switching reduces cervical resorption and providing better esthetics.

Product	Length (mm)	Diameter (mm)
I5	6	4.5, 5, 6
I15	5	6, 7, 8

At the courtesy of Dr. G.M. Stern



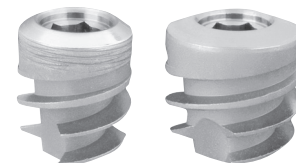
A panoramic X-ray of the right side, demonstrates an extensive resorption of the alveolar ridge of the lower jaw and proximity to the mandibular nerve.



Installation of two wide and short implants to avoid complicated procedures.



I15



I5

A.B. Dental Devices Worldwide
www.ab-dent.com

A.B. Dental Devices, Ltd.

Tel: +972-8-8531388

Fax: +972-8-8522562

CE 0473

ISO 9001:2008

ISO 13485:2003

FDA Clear For Marketing K051719