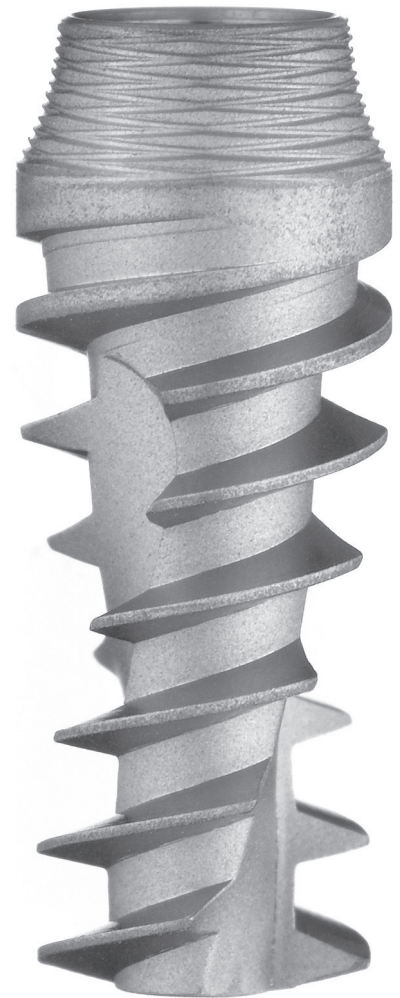




New At A.B. Dental Devices – I 10 – The Non - Resorption Solution!

- Enables a mass cortical bone growth around the implant.
- A groovy / conical implant that enables a better grip of the bone and change of direction during the implantation.
- Designed to prevent future bone resorption.
- The surface is produced using biological means which encourages a fast growth of the bone and an optimal connection between the teeth and the implant.
- Sharp and deep threads that facilitate an outstanding primary stability, increases the surface area and assists in the prevention of the trauma to the bone, enabling the patient's swift recovery.
- Consists of a Platform Switch – a uniform platform for all the diameters.
- A conical implant as the tooth's root.
- Specially designed to enables the change of direction during the implantation.

Available Diameters: 4.2, 5 mm.
Available Lengths: 10, 11.5, 13, 16



A.B. Dental Devices, Ltd.

Tel: +972-8-8531388

Fax: +972-8-8522562

CE 0473

ISO 9001:2008

ISO 13485:2003

FDA Clear For Marketing K051719